

Net2 Provides Increased Site Security & Remote Management for Rail Delivery Services

Type of site:

Transportation

Location:

Fontana, California, United States

Number of users/doors:

- 150 users
- 18 doors

Solution required:

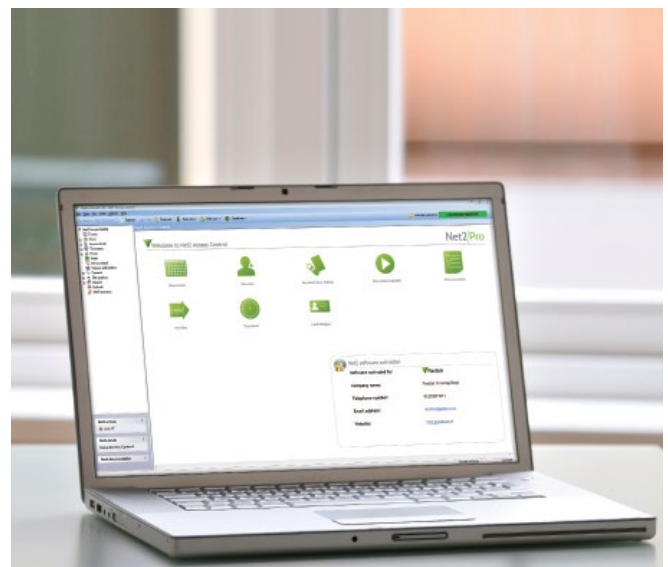
- Scalable solution with the potential to expand
- Remote access to software
- High-security area management

Result:

- Improved access management
- Simple to manage system
- Integration with existing CCTV & video intercom systems

Paxton products used:

- Net2 plus controllers
- Net2 PaxLock
- Net2Air Bridge
- Net2 Pro software
- Net2 Desktop Reader - USB



“

The Net2 software was easy to learn; it didn't take long at all to get to grips with. This solution has increased the flexibility of schedules for when doors can be opened or locked, and users' access rights can be tailored specifically.

”

Denice McManigal, Director of Information Technology,
Rail Delivery Services

Net2 Provides Increased Site Security & Remote Management for Rail Delivery Services

Rail Delivery Services is a transportation and technology company based in Fontana, California. They provide their customers with transport of shipping containers, dedicated local trucking and yard management services. Established in 1981, the company employs 80 employees across the West Coast.

Requirement

Rail Delivery Services needed to replace their existing security solution with a more secure, robust system in preparation for the introduction of a new client. They required a secure solution that could be scaled across their main office and warehouse. The system needed to be operated and managed by the IT Department, who would also require remote access of the premises.

Denice McManigal, Director of Information Technology at Rail Delivery Services, contracted Empire Technologies to provide a suitable solution. Based in Riverside, California, Empire Technologies provide installation and management of network and security systems.

Solution

Nathan Estrada, President of Empire Technologies, recommended Paxton's Net2 access control system to meet their security and budget requirements.

Net2 is a user-friendly and flexible networked access control system that offers centralized administration and control of



sites with up to 1,000 doors and 50,000 users. It is a complete solution that encompasses wireless locksets and video intercom options. Net2 is designed to make the management of any building extremely simple.

With the Net2Online web user interface and the Paxton Connect mobile app, the IT team are able to remotely manage their site and an increased level of security was added with read in/read out readers to monitor who has access to the site and when.

Result

Since installing the Net2 system at Rail Delivery Services, Denice and the IT Department have quickly gotten comfortable with the new software. Denice said: "The Net2 software was easy to learn; it didn't take long at all to get to grips with. This solution has increased the flexibility of schedules for when doors can be opened or locked, and users' access rights can be tailored specifically." Rail Delivery Services are making frequent use of the events log and reporting functions to provide a full audit trail of what is happening on site, which has helped to streamline their security.

They have also taken advantage of Net2's integration capabilities, linking Net2 with their Digital Watchdog CCTV cameras and their existing Comelit video intercom system for a complete site solution.

